

INTERNATIONAL SEMINAR ON

SUSTAINABLE LAND USE AND LANDSCAPE PLANNING

Land use and landscape planning play an important role in shaping sustainable cities and communities that are resilient to various environmental and social risks including extreme weather events, critical change to earth systems, biodiversity loss and ecosystem collapse, natural resource shortages, economic downturn, population decline and hyper aging, societal polarization, infrastructure collapse, etc. While institutions differ among countries and regions, we face similar challenges, and we can learn from research and practice of different backgrounds. This seminar invites two distinguished guests to Urban Land Use Planning Unit, Department of Urban Engineering, School of Engineering, The University of Tokyo as keynote lecturers, and provides an opportunity for students, researchers and practitioners to learn from some of the recent topics of land use and landscape planning in China and Italy.

Date: Wednesday, July 17, 2024

Time: 3:00PM to 5:30PM

Place: HASEKO-KUMA HALL, Engineering Building 11, The University of Tokyo
7-3-1 Hongo, Bunkyo-ku, Tokyo 113-8656 Japan
<https://haseko-kuma.t.u-tokyo.ac.jp/access>

Program:

3:00PM to 3:10PM

INTRODUCTION

Akito MURAYAMA

Professor, Urban Land Use Planning Unit, Department of Urban Engineering, School of Engineering, The University of Tokyo, Japan

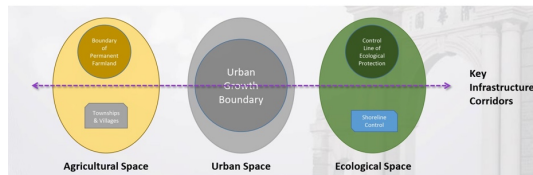
3:10PM to 4:10PM

KEYNOTE LECTURE 1: TERRITORIAL SPATIAL PLANNING TRANSITION IN CHINA

YIN Chengzhi

Associate Professor / Associate Dean, School of Public Policy and Management, Tsinghua University, China

E Pluribus Unum: A Unified Spatial Planning System in China



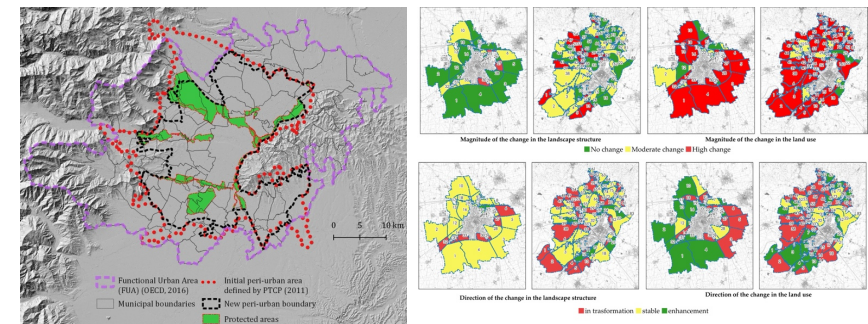
Dr. YIN's research interests include urban and regional planning as well as urban governance. He is particularly interested in development regulation in urban and rural development, and urbanization in developing countries. The recent research projects include "Research on the Governance System and Governance Capacity in Detailed Territorial Spatial Planning in China's Mega Cities" and "Facilitating Rural Developments with Improved Village and Township Planning"

4:10PM to 5:10PM

KEYNOTE LECTURE 2: STUDYING AGRICULTURAL SPACES THROUGH A SPATIAL AND LANDSCAPE PLANNING APPROACH. AN OVERVIEW OF EUROPEAN AND ITALIAN STUDIES AND RESEARCH

Enrico GOTTERO

Research Assistant, Interuniversity Department of Regional and Urban Studies and Planning, Politecnico di Torino, Italy



Dr. GOTTERO is an Architect, Ph.D. in Spatial Planning and Local Development, research assistant and lecturer in the field of Landscape and Regional Planning at the Interuniversity Department of Regional and Urban Studies and Planning (Politecnico di Torino). His research focuses on the interaction between agriculture and rural landscapes, urban and peri-urban agriculture, urban-rural linkages, farmland preservation, agrarian urbanism, as well as food planning.

5:10PM-5:30PM

DISCUSSION

Language: English

Registration: Please register from <<https://forms.gle/apVnj2LncUfdNJJQ7>>

Organizer: Urban Land Use Planning Unit, Department of Urban Engineering, School of Engineering, The University of Tokyo
(E-mail: event@up.t.u-tokyo.ac.jp, Website: <https://up.t.u-tokyo.ac.jp>)